



LATERAL MOVE SYSTEMS



SELECTION GUIDE

Zimmatic[™]
STRENGTH TO GROW ON

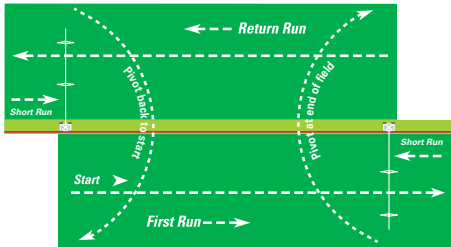


Zimmatic Pivoting Lateral Move System

GEOLATERAL COMBINES THE EASE OF PIVOT IRRIGATION WITH THE COVERAGE OF LATERAL SYSTEMS

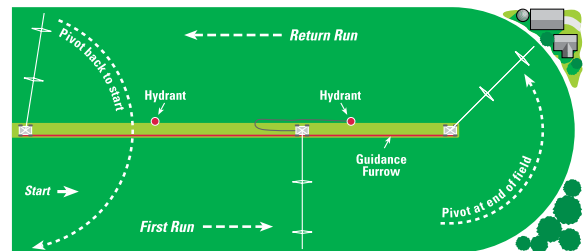
Increase your yields by making better use of your land with a Zimmatic GEOLateral irrigation system. Apply the correct amount of water at the right time uniformly – in every part of your field. Furrow irrigation systems fall short in this area, providing too much water in some areas and not enough in others. But this easy-to-use, economical and reliable hose-fed or ditch-fed system can replace your wheel-line or flood irrigation system for better results year after year.

- Ideal for under-utilized land and irregular fields
- Reduces labor costs as much as 70%
- Decreases energy costs through low-pressure application
- 50% to 70% water conservation over furrow irrigation



Pivot can easily handle offset fields and adjacent fields utilizing its pivoting feature

Increase irrigated land up to 98%



Flexibility for Your Field

- Up to seven towers plus overhang equals a total distance of up to 1,341 feet (408 m) – for maximum field coverage
- Able to irrigate multiple crops
- Zimmatic standard, medium and high clearance tower options to meet specific crop height needs
- Available pipe in 6 5/8-inch (16.82cm) or 8-inch (20.32cm) diameter

Reliable Guidance System

- Machine follows ground level guidance furrow while pulling a water feed hose
- Furrow guidance system which provides positional data to an onboard controller to ensure accurate tracking
- Full safety shutdown built into control and guidance system
- End of hose shutdown to save water

Versatile Dependable Cart

- Pivoting lateral hose-fed or ditch-fed with engine generator set
- Electrical pull cable option for hose-fed only
- Exclusive Zimmatic collector ring designed to eliminate water flow restrictions
- Four-wheel versatile common platform – hose-fed allowing for 720-foot (219m) hose
- Six-wheel high-traction platform – hose-fed allowing for 920-foot (280m) hose
- Ditch-fed model for concrete ditches utilizes a traveling weir assembly





Why a Zimmatic® Lateral Move System?

- **Land prices are high – you need to maximize production**

A Zimmatic Lateral Move or GEOlateralSM can irrigate fields up to 320 acres with 98% coverage. They can put more of your field to work, virtually eliminating idle land.

- **It takes a good yield just to recover your seed and chemical costs**

A Zimmatic Lateral Move System lets you combine maximum irrigation coverage with a uniform watering pattern over your entire field. This combination helps ensure a better yield out of every acre for a higher return on your investment in production inputs.

- **You want the kind of control that will increase crop quality and add value at harvest**

Zimmatic Lateral Move Systems are a top choice of irrigators growing high-value crops – particularly contract growers. In addition to more coverage and uniformity, they're a management tool for providing precise control of water and chemical usage.

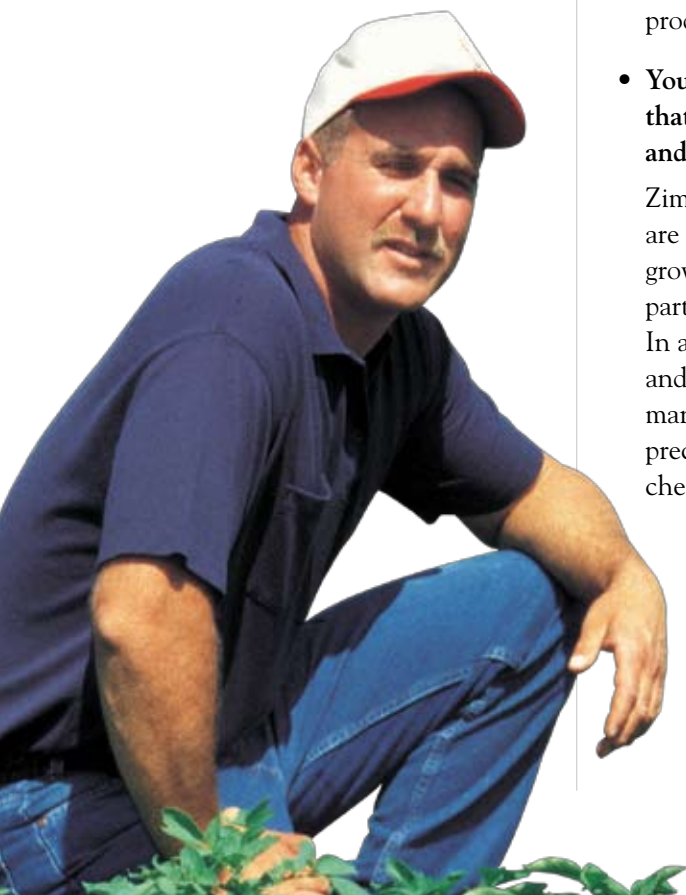
In total, they can help increase your ability to plan more precisely and react faster in maintaining crop quality standards and meeting yield goals.

- **You want a system that can be designed for your operation and conserve resources**

Zimmatic Lateral Move Systems are ideal for conversion from flood irrigation. They are a proven way to get more benefit from less water and to reduce pumping costs. In addition, their modular design allows them to be factory-tailored to your field and application.

- **You want a system that requires less labor and time to manage**

GrowSmartTM controls make scheduling lateral move system operation faster and easier than even before. Our remote control system provides monitoring and management of system to minimize time and labor costs.





Zimmatic Standard Lateral Move System

TWO MODELS TO MATCH YOUR OPERATION.

If you've got a square, rectangular or "L-shaped" field, a standard lateral move irrigation system brings more of your crop into full production. With a choice of water supply and guidance systems, each system can be customized to your individual needs and situation.

Hose-Fed (a)

- Supplied with water through a large-diameter hose attached to a pressurized mainline
- Pivot and/or towing options for use on adjacent fields for increased coverage area (see diagrams on next page)
- Uses 2-wheel or 4-wheel cart (depending on field size) with four-, six-, and eight-inch hose (10.2, 15.3, 20.3 cm)

Ditch-Fed (b)

- Can use existing ditch at field edge or one in the center
- Ditches can be unlined or lined with concrete or plastic and can accommodate grades up to one percent
- Depending on ditch type, water is supplied through a floating intake or a floating self-cleaning filter screen
- For a concrete ditch, a traveling weir assembly is available

System Type	Hose-Fed	Ditch-Fed
Field Size	Up to 160 acres (65 ha)	160 to 320 acres (65 to 130 ha)
Power Source	On-board diesel generator or electrical cable	On-board diesel generator and pump or electrical cable
Guidance System	Furrow, buried cable or above ground cable	Above ground cable or buried cable
Grade of Field	Up to 6%	Flat
Extended Coverage Option	Yes	No



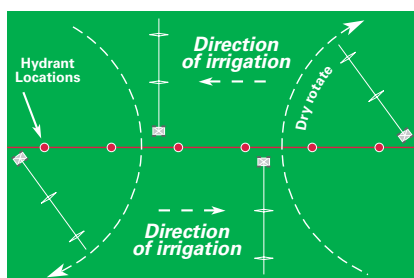
WE'LL CUSTOM BUILD A SYSTEM JUST FOR YOU.

Cart and Power Options

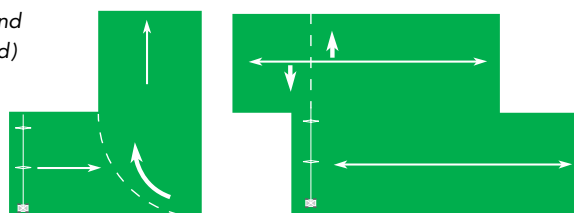
Depending on system size, Zimmatic lateral move systems can be equipped with a 2-wheel or 4-wheel cart which can be powered by:

- An on-board diesel engine and generator set (plus an on-board pump for the ditch-fed system)
- Commercial power via a heavy-duty mining-type cable connected to outlet boxes along the line of travel
- Fertigation and chemigation equipment can be customized to your requirements by your Zimmatic dealer

Pivot and reverse for double coverage (c)



"L-shaped" and offset fields (d)



Accurate Guidance Systems

Three guidance systems are available to match the needs of your field (see chart on previous page).

They include:

- Furrow
- Aboveground cable
- Buried cable

Precision Application

Your system will be computer-designed with:

- Sprinklers – Rotators, sprays, LEPA, wobblers or impacts to match desired water application rate
- Drops – To minimize water loss due to wind and evaporation
- Offsets and Boombacks – To expand application area and minimize wheel tracking

Options for Extended Coverage

The diagrams above illustrate how equipping your Zimmatic hose-fed lateral move with a pivot and/or reverse tow package can lower your cost per irrigated acre.

Pivot and reverse for double coverage (c). In this situation, the lateral move cart is secured to a turntable when it reaches the end of the field. Then it pivots and reverses to cover the other side of the field.

"L-shaped" and offset fields (d) can be easily handled by combining the pivot and reverse tow options.



Pipe Options

- Galvanized steel offers the lowest cost per foot
- High-strength aluminum provides superior corrosion resistance
- High-alloy stainless steel is ideal for serious problem water
- Poly-lined pipe is a top-of-the-line alternative for waste water management
- Galvanized pipe available in four diameters: 5 9/16 in. (14.1 cm), 6 5/8 in. (16.8 cm), 8 in. (20.3 cm), 10 in. (25.4 cm)

Clearance Heights

- Standard tower structure distributes load over a greater area
- Medium-clearance structure is the industry's first for high-yielding corn hybrids
- High-clearance structure is ideal for sugar cane and tree crops

Custom Sprinkler Packages

- Wide variety of drops, offsets, boombacks, pressure regulators and end guns
- Rotating-spray, fixed-spray and LEPA sprinklers provide precise coverage and pressure

Watertronics®

- Complete, customized and integrated pump station systems
- Consistent water delivery is maintained from river stations, irrigation reservoirs, canals and lagoons while lowering energy costs
- Multiple laterals can be run from one pump

FieldNET™

Real-time, Web-based irrigation management

- Networks all of your pivots and laterals, no matter what brand - and gives you access and control from any computer or phone
- The user-friendly Web portal lets you configure basic irrigation requirements and make basic adjustments quickly and easily
- Monitor your lateral status from anywhere in the world
- Text message alerts keep you updated on pivot and lateral status

Gain Efficient Control with Smart Technology

Zimmatic® and GrowSmart™ technology work together to provide the most efficient way to deliver, monitor and control water and chemical application in your fields.

Find out how to achieve higher yields with Zimmatic® Lateral Move Systems. Visit www.zimmatic.com or talk to your Zimmatic dealer.

Zimmatic™
STRENGTH TO GROW ON

2222 N 111th St., Omaha, NE 68164 • 1-800-829-5300 • 1-402-829-6800 • www.lindsay.com



Lean, Clean and Green. Lindsay Corporation is committed to developing environmental awareness and implementing sustainable practices to reduce the use of and protect energy, water, and all other resources.



© 2010 Lindsay. All rights reserved. Zimmatic, GrowSmart, and FieldNET are trademarks or registered trademarks of the Lindsay Corporation. All brand names are trademarks or registered trademarks of their respective companies.



ZIMM LATMOV BRO - SP 3500 0310